



# The Knight's Tablet

**"Put on the armor of God and fight the good fight of faith." – St. Paul**

**January 20, 2021**

## Upcoming Events

**January 20~** Registration is now open!

**January 21~** SPPTO Parent Meeting @6:30 in the Gym—one lucky winner will receive \$25 off their TWB obligation! (must be present to win)

**January 29~** 8th Grade Pro-Life Mass and Retreat

**February 1-5 ~** Catholic Schools Week! Please see page 3 for details.

**February 5~** Noon Dismissal/Spirit Day

**February 15~** No School/President's Day

Good Afternoon,

Registration information for the 2021-2022 school year was emailed home to all current students yesterday. The Early bird special will end on February 1. If you have any questions at all please feel free to reach out to me. In looking ahead we will be celebrating Catholic Schools Week January 31– February 5. There are details on page 3. St. Paul is a wonderful community and school. God is good! Thank you all for the support you have given to our beautiful school.

Grace and blessings,  
Mrs. Kaimann

## Virtue of the Month **GRATITUDE**

*Seeing everything as a gift and being thankful!*

*Before you go to bed each night, thank God for ten things He gave you that day!*



## COVID-19 Reminder

If anyone in your family household has HOUSEHOLD HAS SYMPTOMS AND/OR GETS TESTED FOR COVID, PLEASE KEEP YOUR CHILD(REN) HOME UNTIL YOU HAVE MORE INFORMATION. PLEASE CALL MRS. KAIMANN IF YOU ARE UNSURE ABOUT WHAT TO DO! THANK YOU FOR YOUR SUPPORT!

## Registration for the 2021-2022 School Year is now open!

- All registrations returned on or before Monday, February 1 will receive a \$25 per child discount.
- Please see pages 4, 5 and 6 for updated scholarship guidelines.

We go outside for Recess; please make sure the kids come to school with appropriate winter clothing (hats, gloves, coats, etc)



### **DON'T FEEL WELL? STAY HOME WHEN YOU ARE SICK**

Tell your mom, dad, or caregiver before you come to school. Tell your teacher or an adult if you become sick at school



cough



Shortness of breath  
or problem breathing



chills



sore throat



loss of taste  
or smell



muscle pain

### **OTHER SYMPTOMS INCLUDE:**

fever, runny nose, diarrhea, feeling nauseous  
or vomiting, feeling tired, headache,  
and poor appetite

## **SPPTO Parent Meeting**

When: Thursday, January 21

When: 6:30PM

Where: St. Paul Gym

Why: You could be the next winner of \$25 off  
your TWB obligation.



# St. Paul School

## Catholic Schools

### Week 2021

### January 31-February 5

National Catholic Schools Week is the annual celebration of Catholic education in the United States. Through all the events of the week our school will focus on the value Catholic education provides to young people and its contributions to our church, our communities and our nation. The 2021 theme is **FATH.EXCELLENCE.SERVICE.**

Below is the week at a glance:

MONDAY	TUESDAY	WEDNESDAY	THURSDAY	FRIDAY
Celebrating Our St. Paul Community	Celebrating Our St. Paul Students	Celebrating Our Vocations	Celebrating our Nation	Celebrating our Faculty & Staff
Dress in ANY St. Paul wear	Special Dress Down Day	Dress as your future self	Dress in Red, White, & Blue	Spirit Day
St. Paul Trivia Between Classes	7 vs 8 grade basketball	All School Mass	Make cards for the military.	Noon Dismissal
Special Thank you to parents	All School STEAM	Spelling Bee	Door Decorating Contest	Staff Appreciation Lunch

**TUITION ASSISTANCE INFORMATION 2021-2022 SCHOOL YEAR**  
**NOTICE OF UPCOMING SCHOLARSHIP APPLICATION PERIOD**  
**ARCHDIOCESE & BEYOND SUNDAY SCHOLARSHIPS 2021-2022**  
**SCHOLARSHIP APPLICATION AVAILABLE ON January 11<sup>th</sup>, 2021**

**Alive! In Christ is first-come, first served for all new awards and younger siblings that may be eligible, so we encourage you to apply as early as possible.**

Approximately 600 new awards will be available for the Archdiocese

**The application deadline for Beyond Sunday, Catholic Families Tuition Assistance (CFTA), and the Parish Employees Endowment Fund (PEEF) is February 26<sup>th</sup>, 2021. Any family who would like to be considered for these programs, even if you are applying for requalification, must apply between January 11<sup>th</sup> and February 26<sup>th</sup>, 2021.**

Up to 130 new elementary school awards, primarily in Kindergarten, will be available in Beyond Sunday for Catholic families registered in a parish. Siblings attending the same school are not eligible in this program.

**IMPORTANT ADDITIONAL INFORMATION**

- If you have ever applied to TTEF before or are currently on scholarship, you must use the email address we have on file for you. If you do not know what this email address is, please email our office at [ttef@archstl.org](mailto:ttef@archstl.org) or call us at 314-792-7777. If you know what your email address is but forgot your password, please visit the family login page and click Forgot Password below the family login box. To access the Family Login Page, go to [www.ttef-stl.org](http://www.ttef-stl.org) and click APPLY HERE.
- Individual students may not receive more than one scholarship if awarded. However, Catholic Families Tuition Assistance and Parish Employees Endowment Fund are tuition aid programs that may be awarded in addition to another scholarship. Families may have multiple children receiving scholarships.
- Documents needed to complete applications include:
  - Proof of income: Adjusted gross income (taxes or W2) and any other assistance you may receive (including but not limited to Child Support, Food Stamps, and Social Security)
  - High School Students are required to submit responses to two short-answer questions and contact information for two references at the time of application to be considered for Beyond Sunday Fellows Program. Students currently receiving a Beyond Sunday Fellows scholarship are not required to submit responses or references for requalification. For more information about the Beyond Sunday Fellows Program, please see the Beyond Sunday Fellows FAQs, available at [www.ttef-stl.org](http://www.ttef-stl.org).

**PLEASE VISIT THE TODAY AND TOMORROW WEBSITE FOR MORE INFORMATION ON ACCEPTABLE DOCUMENTATION AND APPLICATION SUPPORT!**

[www.ttef-stl.org](http://www.ttef-stl.org)

**ST. PAUL PARISH SCHOLARSHIPS**

In addition to the Today and Tomorrow scholarships, St. Paul Parish also provides tuition assistance for St. Paul School. Any family requesting tuition assistance from St. Paul Parish must **FIRST** complete the Today and Tomorrow Educational Foundation Scholarship application **AND** submit a "FACTS" application (at no charge) at <https://online.factsmgt.com/aid>.

Please Contact Teresa Boehmer at parish office with any questions regarding tuition assistance at 636-978-1900, ext. 224





## Scholarship Information for Parents for the 2021-2022 School Year

*One application is used to apply for all scholarships funded by the Catholic Education Office, the Roman Catholic Foundation of Eastern Missouri, and the Today & Tomorrow Educational Foundation. To apply, please visit [www.ttef-stl.org](http://www.ttef-stl.org) and click Apply Here. The Scholarship Office at TTEF will review your family's application and determine if your family is eligible for any awards offered based on each program's guidelines and funding availability. The application is online only and is free of cost!*

**For families applying to Archdiocesan/parochial elementary schools:** Funding is available through Alive! In Christ for approximately 600 new awards for students of all faiths. Alive! In Christ is first-come, first-served and the maximum award is \$2,000. Residents of the City of St. Louis applying for Archdiocesan and private schools in the City may be eligible to receive a Help for Today, Hope for Tomorrow scholarship. Maximum award in this program is also \$2,000 and approximately 350 new awards will be available.

Approximately 130 new awards primarily in Kindergarten will be available through the Beyond Sunday scholarship program for Catholic families registered in a parish. The maximum award for new recipients in this program is \$1,750 and the application deadline is February 26<sup>th</sup>, 2021. Because demand is high and preference for Beyond Sunday scholarships is given to Catholic families registered in a parish, it is expected that all new awardees will be registered Catholics.

**For families applying to Archdiocesan and private-Catholic high schools:** Approximately 50 new Beyond Sunday Fellows scholarships will be available, primarily for incoming freshmen applying for Archdiocesan high schools. Due to high demand, it is expected that all new awardees will be registered Catholics. The maximum award for new recipients in this program is \$3,500 and the deadline to apply is February 26<sup>th</sup>, 2021.

**For families currently receiving ANY scholarship:** All families are encouraged to apply as early as possible. New and returning applications for Beyond Sunday, SOAR!, CFTA, and PEEF are due by February 26<sup>th</sup>, 2021. Alive! In Christ is first-come, first-served, including for all eligible siblings! City residents should also apply as early as possible to be considered for new awards in Help for Today, Hope for Tomorrow. Requalification applications for Alive! In Christ and Help for Today, Hope for Tomorrow may be submitted through May 1<sup>st</sup>, 2021. However, you MUST apply by February 26<sup>th</sup> to be considered for any other programs.

**For Catholic families applying to Archdiocesan/parochial elementary and high schools:** Funding for Catholic students in Catholic families is available through the Catholic Families Tuition Assistance program. Approximately 350 new awards will be available. The application deadline for returning families and applying new is February 26<sup>th</sup>, 2021.

**For students of parish employees:** Students of parish employees working 1,000 hours or more per year may be eligible for the Parish Employees Endowment Fund. The application deadline for returning families and applying new is February 26<sup>th</sup>, 2021.

---

**APPLICATION AVAILABLE JANUARY 11<sup>th</sup>, 2021!**

***See Reverse for Important Additional Information  
regarding Application Requirements!***

# Important Additional Information

- New Families applying may only receive one scholarship program per student. If your student currently receives CFTA or PEEF in addition to their primary scholarship they may continue to receive both as long as they qualify. Families may have multiple children receiving scholarships, depending on program guidelines.
- Documents needed to complete applications include:
  - High school students who are eligible for Beyond Sunday and do not already have an award are required to respond to two short answer questions, as well as provide contact information for two references within the application. For more information about the Beyond Sunday Fellows Program, please visit [www.ttef-stl.org](http://www.ttef-stl.org) or see the flyer: *Beyond Sunday Fellows Frequently Asked Questions*.
    - Proof of residency (St. Louis City residents only): ONE of the following documents
      - Missouri Driver's License or Utility Bill
      - House/Apartment Lease or Deed
    - Proof of Income (see table below)
      - W2
      - Federal Tax Return Form 1040
      - Government Assistance Award Letter

**Please note that the income your family has listed on the application must be supported by all required documentation and confirmed by the TTEF scholarship office as eligible in order for an application to be considered complete!**

Type of Income	ONE of the Following Proofs are Required for EVERY Type of Income You Receive
Adjusted Gross Income (Wages from employment and all other income reported on Federal Taxes)	<ul style="list-style-type: none"> <li>• Pages 1 &amp; 2 of your 2019 or 2020 Federal Income Tax Return (Form 1040)</li> <li><i>If you do not file taxes you may submit...</i></li> <li>• 2019 or 2020 W2 for all places of employment for you and your spouse</li> </ul> <p style="text-align: center;"><b>OR</b></p> <ul style="list-style-type: none"> <li>• Three paystubs from 2020 for all places of employment of you and your spouse</li> </ul>
<b>If applicable, please provide proof of any supplemental income your family is receiving.</b>	
Business Income	<p><b>NOTE: If this income is already claimed on your taxes, do not list the amount as additional Business Income on your application and do not submit additional documentation or your income will be calculated higher than it should be.</b></p> <ul style="list-style-type: none"> <li>• Copy of your business tax return, financial statements or a notarized letter stating your total earnings</li> </ul>
Child Support	<ul style="list-style-type: none"> <li>• If court ordered, provide documentation stating amount of support and your name</li> <li><i>If not court ordered, you may submit...</i></li> <li>• Transaction record displaying your name and monthly or annual amount</li> </ul>
Public Assistance Cash	<ul style="list-style-type: none"> <li>• Benefit Summary or Award letter displaying name and award amount</li> </ul> <p style="text-align: center;"><b>OR</b></p> <ul style="list-style-type: none"> <li>• Transaction record displaying your name and monthly or annual amount</li> </ul>
Food Stamps	
Social Security/SSI	
Unemployment/Worker's Comp	
Other (includes but is not limited to adoption or foster subsidies, tuition support from family, friends, or employer)	<ul style="list-style-type: none"> <li>• If you have other sources of income not reported elsewhere, please provide notarized letters from your employer, family/friends providing financial assistance stating the annual amounts.</li> </ul>

**We look forward to providing your family with the opportunity to apply for scholarships funded by the following partners:**





# ST. PAUL IN ST. PAUL

## Healthy Habits Lunch

JANUARY 2021

\* = Baked

WG=Whole Grain Ingredients

Monday	Tuesday	Wednesday	Thursday	Friday
				
4	5	6	7	8
<b>ENTRÉE CHOICE 1</b> Spaghetti with Meat Sauce <b>NATIONAL SPAGHETTI DAY</b> <b>ENTRÉE CHOICE 2</b> Chicken Drumsticks <b>SIDE ITEMS:</b> Green Beans Breadstick 100% Fruit Juice Bar Milk, Fat Free	<b>ENTRÉE CHOICE 1</b> Mini Tacos <b>ENTRÉE CHOICE 2</b> Chicken Parmesan Slider <b>SIDE ITEMS:</b> Corn Seasonal Fresh Fruit Fresh Baked Brownie Milk, Fat Free	Papa John's Pepperoni Pizza Carrots & Celery with Ranch Chilled Fruit Milk, Fat Free 	<b>ENTRÉE CHOICE 1</b> All Natural Hot Dog on Bun <b>ENTRÉE CHOICE 2</b> Soft Pretzel with Cheese <b>SIDE ITEMS:</b> Potato Chips Seasonal Fresh Fruit 2 Oreos Milk, Fat Free	
11	12	13	14	15
<b>ENTRÉE CHOICE 1</b> Turkey, Bacon & Cheese on Skinny Bun <b>ENTRÉE CHOICE 2</b> Mini Corn dogs <b>SIDE ITEMS:</b> Baby Carrots Light Ranch Dressing Seasonal Fresh Fruit Mini Rice Krispies Treat Milk, Fat Free	<b>ENTRÉE CHOICE 1</b> Scrambled Eggs <b>NATIONAL DONUT DAY</b> <b>ENTRÉE CHOICE 2</b> French Toast Sticks <b>SIDE ITEMS:</b> *Hash Brown Triangle Seasonal Fresh Fruit Donut Milk, Fat Free	Papa John's Cheese Pizza Tossed Salad with Ranch Chilled Fruit Milk, Fat Free 	<b>ENTRÉE CHOICE 1</b> * Chicken Strips BBQ Sauce <b>ENTRÉE CHOICE 2</b> Pulled Pork Slammer <b>SIDE ITEMS:</b> Corn Seasonal Fresh Fruit Cookie Milk, Fat Free	<b>ENTRÉE CHOICE 1</b> Ham & Cheese on Bagel <b>NATIONAL BAGEL DAY</b> <b>ENTRÉE CHOICE 2</b> Chicken Nuggets *Cheddar Goldfish, WG Seasonal Fresh Fruit *Teddy Grahams Milk, Fat Free
18	19	20	21	22
	<b>ENTRÉE CHOICE 1</b> *Bosco Stick with Spaghetti Sauce <b>ENTRÉE CHOICE 2</b> Toasted Ravioli <b>SIDE ITEMS:</b> Mixed Vegetables Seasonal Fresh Fruit 100% Fruit Juice Bar Milk, Fat Free	Papa John's Pepperoni Pizza Tossed Salad with Ranch Chilled Fruit Milk, Fat Free 	<b>ENTRÉE CHOICE 1</b> Hamburger on WG Bun <b>ENTRÉE CHOICE 2</b> Soft Taco <b>SIDE ITEMS:</b> *Baked Fries Baby Carrots Seasonal Fresh Fruit Milk, Fat Free	<b>ENTRÉE CHOICE 1</b> *Pig in a Blanket <b>ENTRÉE CHOICE 2</b> Popcorn Chicken <b>SIDE ITEMS:</b> Smiley Face Potatoes Green Beans Seasonal Fresh Fruit Milk, Fat Free
25	26	27	28	29
<b>ENTRÉE CHOICE 1</b> *Chicken Patty Sandwich WG <b>ENTRÉE CHOICE 2</b> Jumbo Corn dog <b>SIDE ITEMS:</b> *French Fries/Ketchup Green Beans Seasonal Fresh Fruit Milk, Fat Free	<b>ENTRÉE CHOICE 1</b> *Pancake with Syrup <b>ENTRÉE CHOICE 2</b> Egg & Cheese Bagel <b>SIDE ITEMS:</b> *Sausage Patty Seasonal Fresh Fruit Yogurt Milk, Fat Free	Papa John's Cheese Pizza Carrots & Celery with Ranch Chilled Fruit Milk, Fat Free 	<b>ENTRÉE CHOICE 1</b> *Breaded Chicken Drumstick <b>ENTRÉE CHOICE 2</b> Toasted Cheese Ravioli <b>SIDE ITEMS:</b> Buttered Noodles Mixed Vegetables Jell-O Milk, Fat Free	<b>ENTRÉE CHOICE 1</b> *Cheese Quesadilla <b>NATIONAL CORN CHIP DAY</b> <b>ENTRÉE CHOICE 2</b> Taco Frito Boat <b>SIDE ITEM</b> Spanish Rice Corn Seasonal Fresh Fruit Milk, Fat Free
<b>DAILY SPECIALS (GRADES 5-8 ONLY) \$3.50</b>				
TOASTED RAVIOLI AND FRUIT	GRILLED CHICKEN SANDWICH AND CHIPS	PRETZEL WITH CHEESE AND FRUIT	6" FRENCH BREAD CHEESE PIZZA AND FRUIT	CHICKEN NUGGETS AND FRIES

All FSC menus follow the USDA guidelines & Archdiocese Wellness Plan and have been approved by Registered Dietitian Associates, Inc. (does not include alternate entrée).



Food Service Consultants, Inc.  
 "A Local Company Serving You With Pride"



# January

Monday	Tuesday	Wednesday	Thursday	Friday
4	5	6	7	8
R1 – Dunkin R2 – CS –	R1 – R2 – CS –	R1 – R2 – CS –	R1 – R2 – CS –	NOON DISMISSAL
11	12	13	14	15
R1 – Dunkin R2 – CS – Wright	R1 – Montgomery R2 – CS –	R1 – Smith R2 – CS –	R1 – HELP NEEDED R2 – CS – Steiniger	R1 – HELP NEEDED R2 – CS –
18	19	20	21	22
NO SCHOOL	R1 – HELP NEEDED R2 – CS –	R1 – Smith R2 – CS –	R1 – HELP NEEDED R2 – CS –	R1 HELP NEEDED R2 – CS –
25	26	27	28	29
R1 – Dunkin R2 – CS –	R1 – Montgomery R2 – CS –	R1 – Smith R2 – CS –	R1 – HELP NEEDED R2 – CS – Steiniger	R1 HELP NEEDED R2 – CS –

Interested in Volunteering? We would love to have you ! We are always looking for help serving lunch, or helping outside at recess. Please make sure you have updated your Safe Environment Course.  
See the following page for details! Thank you!

If you have any extra time and would like to help out during lunch feel free to sign up at the following links:

Recess Monitors: <https://www.signupgenius.com/go/8050F4FACA822A2F85-202021>

Cafe Servers: <https://www.signupgenius.com/go/8050F4FACA822A2F85-2020211>





## SAFE ENVIRONMENT USER REGISTRATION

Got to <https://www.preventandprotectstl.org>

Click "Register" below the LOG IN button (image at right).

Enter the passcode **stlprotect** when prompted.

Select the type of location where you are a volunteer or employee

- Parish or Parish School

Select the specific location by name

- St. Paul Parish and School (St. Paul)

Click the roles associated with your employment/service at the parish.

If you are active at only one location, this will be your "primary" location.

If you are active at more than one location, click the ADD PARISH/LOCATION button and repeat the steps above. With more than one location, please click the "This is my main/primary location" circle to indicate where you are employed or, if you are a volunteer, where most of your ministry or service is performed.

Complete your personal information. Please enter your **legal first name** for the purposes of the background screening.

Create a username, password and password clue.

Agree to the Terms of Use and click SUBMIT.

You will then be prompted to submit information for a background screening, register for a Protecting God's Children workshop\*, view two online training modules, and agree to the Code of Ethical Conduct.

\*If you have previously attended a PGC workshop, the system will find and/or ask you to confirm your previous record of attendance. You will not be prompted to register for an upcoming workshop. If, for some reason, it does not match your previous training to this account and you are prompted to register for a class, please register for "PREVIOUSLY ATTENDED-DATE NOT LISTED" and send an email to the address below. We will apply the correct training record to your account.

Use may use the links in your approval checklist to access these requirements. These steps may be completed all at once or may be completed separately at your convenience. You will receive an automated email weekly to remind you which requirements are outstanding. When all compliance requirements have been completed, your account will be approved and you will be clear to work with minors and vulnerable adults.

### LOG IN

☐ Remember this account**LOG IN**[Forgot Password](#)[Register](#)

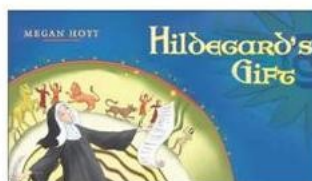
- ☒ Register onto the site
- ☐ [Submit New Background Check](#)
- ☐ Complete "[Protecting God's Children](#)" training
- ☐ Complete "[Mandated Reporter](#)" training
- ☐ Complete "[Code of Conduct](#)" training
- ☐ Sign "[Code of Conduct](#)"

Should you need any assistance, please contact [ocyp@archstl.org](mailto:ocyp@archstl.org)

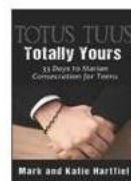
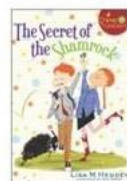
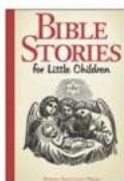
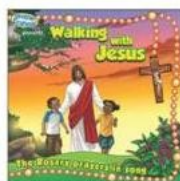
## St. Paul Church has purchased a gift for you!

Enjoy a free subscription to [formed.org](http://formed.org), which features the best Catholic content, all in one place! FORMED includes:

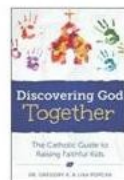
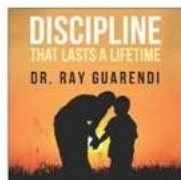
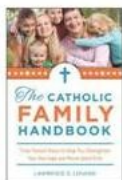
### Dozens of Children's Programs in English and Spanish



### Children's Books and Audio



### Resources for Parents



### It's easy and free to start enjoying FORMED!

- Go to [signup.formed.org](http://signup.formed.org)
- Select your parish (Search by zip code - 63366)
- Register with your name and email address
- Check that email account for a link to begin using FORMED



# **2021**

## **ST. PAUL PARISH**

### **MONTHLY CASH GIVEAWAY!!!**

### **TO BENEFIT TUITION ASSISTANCE**

### **YOU COULD BE A WINNER!!!**



- **\$500 to be given away every month of the year**
- **Drawings held the 1<sup>st</sup> Monday of each month**
- **12 chances to win \$500! If your name is drawn, it will be placed back in the drum for the next month drawing. Each chance makes you eligible to win EVERY month!**
- **Tickets are only \$50 each**
- **Return tickets to the Parish Center, thru the Sunday collection or the School Office in an envelope marked "Monthly Cash Giveaway"**
- **Additional tickets available in the back of church or at the Parish Center**





# **WINTER INDOOR SOCCER CAMPS**

## **SESSION 2**



**PROGRAM COORDINATOR: MARTY PIKE**  
**MPIKE@SPORTINGSTL.COM - (314) 393-1164**

**Boys and Girls Ages 5-12**  
**February-March 2021**

Multiple days to choose from Sunday,  
Monday, Tuesday, Wednesday,  
Thursday, & Saturday!

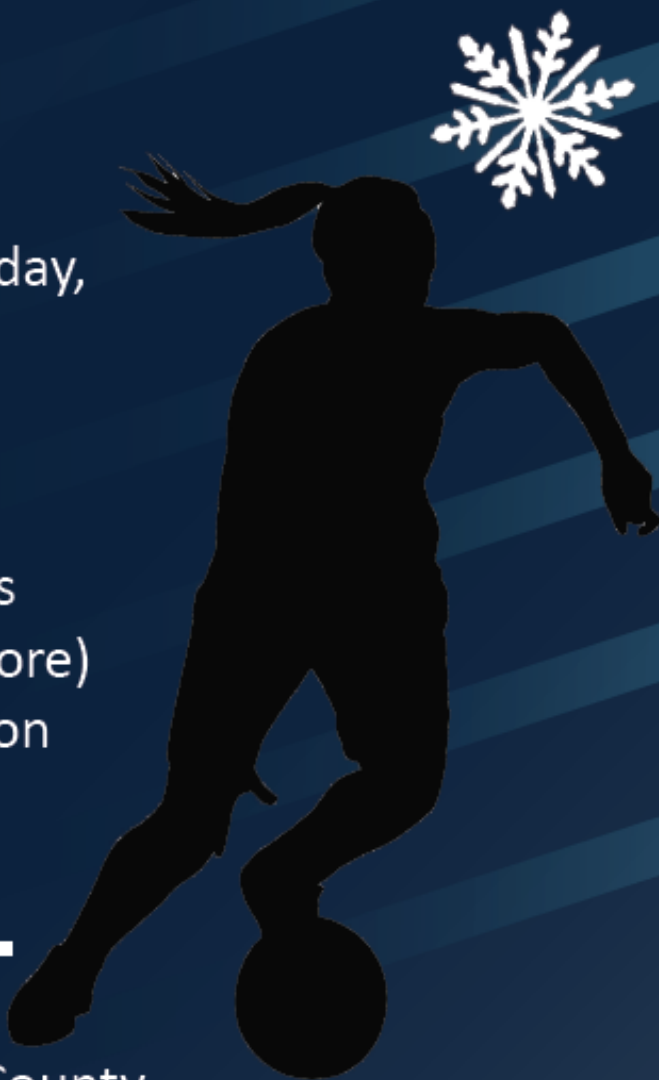
**Eight Week Program: \$140**

Learn individual ball handling skills  
(dribbling, passing, shooting, & more)  
in a fun atmosphere that focuses on  
individual ball skills!

Small sided scrimmages & more!

---

Several locations to choose from:  
Fenton/West County, St. Charles County,  
South County, & Webster Groves!



# **SPORTINGSTL.COM/CAMPS**

Disclaimer: Sporting St. Louis is a non-profit, youth sports organization and is not affiliated with any school district.  
The views, opinions, and programs of Sporting St. Louis do not necessarily represent or align with those of any school district

# Wear a mask. Stay in school.



## COVID-19 School Scenarios

*with no documented transmission in the classroom setting*

### EVERYONE MASKED

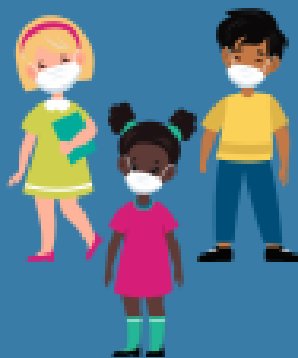
When a masked person tests positive and those exposed are wearing masks

COVID +

Close Contacts



ISOLATE



SELF-MONITOR  
AND QUARANTINE  
CAN ATTEND SCHOOL

### CLOSE CONTACTS MASKED

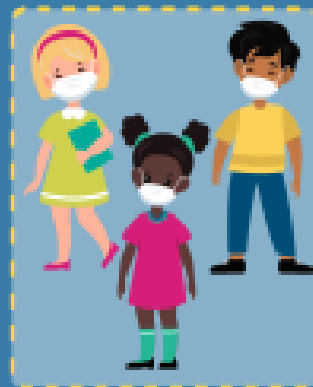
When an unmasked person tests positive and those exposed are wearing masks

COVID +

Close Contacts



ISOLATE



QUARANTINE  
CANNOT ATTEND SCHOOL

### CLOSE CONTACT:

Someone who was within 6 feet of a person diagnosed with COVID-19 for a cumulative total of 15 minutes or more throughout a 24-hour period starting from 2 days before illness onset (or, for asymptomatic patients, 2 days prior to test specimen collection).

### SELF-MONITOR:

Perform a self-check or be monitored daily for symptoms of COVID-19 over a 14-day period. Contact your health care provider with questions about symptoms.

### CLOSE CONTACTS UNMASKED

When a masked person tests positive and those exposed are not wearing masks

COVID +

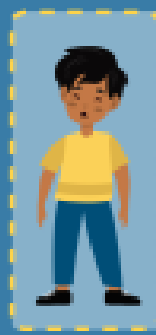
Close Contacts



ISOLATE



SELF-MONITOR  
AND QUARANTINE  
CAN ATTEND SCHOOL



QUARANTINE  
CANNOT ATTEND SCHOOL

### NO ONE MASKED

When an unmasked person tests positive and those exposed are not wearing masks

COVID +

Close Contacts



ISOLATE



QUARANTINE  
CANNOT ATTEND SCHOOL

### QUARANTINE:

The practice of separating individuals who have had close contact with someone diagnosed with COVID-19 to determine whether they develop symptoms or test positive for the disease.

### ISOLATION:

The practice of separating people diagnosed with COVID-19 from others who are not sick to prevent further exposures and/or spread of the disease.