



The Knight's Tablet

"Put on the armor of God and fight the good fight of faith." – St. Paul

October 20, 2021

Upcoming Events

Oct 20~ End of the Quarter

Oct 21~ Picture Retake Day

Oct 22~ Trunk or Treat

Oct 25~ Walking Rosary

Oct. 28 ~ Dress down in your favorite Halloween shirt! Noon Dismissal/ Parent Teacher Conferences.

Oct. 29 ~Nov. 5 - Fall Break—time to rest, relax, and stay well!

Nov 8– Classes resume

Nov 15-19~ READ-A-THON (details coming soon!)

Servers Schedule

Saturday, October 23rd – Volunteers Welcome

Sunday, October 24th

7:00am - Anna Von Bokel and Sam Byrnes

9:00 am - Olivia Auchly and Charles Hall

11:00 am - Carter Lickteig and Gabrielle Orf

October 25th — October 28th~ Daily Mass

M, T, W, TH 7:45 - Gabrielle Orf

T 7:45- Sophia Riffle

F 7:45 - No School– Volunteer Welcome

Saturday, October 30th– Volunteers Welcome

Sunday, October 31st

7:00am - Rachel Ferranto and Gavin Hemmer

9:00 am - Nathaniel and Michael Elsenrath

Good afternoon St. Paul Families,

As we complete the first quarter of the 2021/22 school year I would like to thank you for all of the support you have given all of the faculty and staff here at St. Paul School. Report cards will be ready to view next week. If you did not get a chance to sign-up for parent teacher conferences please contact Miss Richey as soon as possible.

Please send a rosary with your child next Monday if they have one that can be brought to school. This will be for the "Walking Rosary" to be said in the morning with Father Blessing.

Have a great week!

Mrs. Kaimann



Virtue of the Month

Remember **Studiousness** is seeking knowledge to grow closer to Truth. Make an extra effort for the remaining of this month to seek God in all of your studies!

Studiousness

School News /Reminders

DON'T FEEL WELL? STAY HOME WHEN YOU ARE SICK

Tell your mom, dad, or caregiver before you come to school. Tell your teacher or an adult if you become sick at school



cough



Shortness of breath
or problem breathing



chills



sore throat



loss of taste
or smell



muscle pain

OTHER SYMPTOMS INCLUDE:

fever, runny nose, diarrhea, feeling nauseous
or vomiting, feeling tired, headache,
and poor appetite

WATER BOTTLE

Please remember to send a water bottle in with all K-8th grade students. They will be allowed to refill them throughout the day.



Join us for Rosary Tuesday on 11/2/21 in the church. Church opens at 6:00pm and prayer starts 6:15pm.

This will be a once-a-month occurrence.

All ages are welcome! Kids are encouraged to come and be the leaders in prayer.



Student Symptom Decision Tree

Screen all students for potential COVID-19 symptoms or exposure

Low-risk: general symptoms



Fever ($\geq 100.4^{\circ}\text{F}$)



Sore throat



Congestion/runny nose



Headache



Nausea/vomiting/diarrhea



Fatigue/muscle
or body aches

High-risk: red flag symptoms



Cough



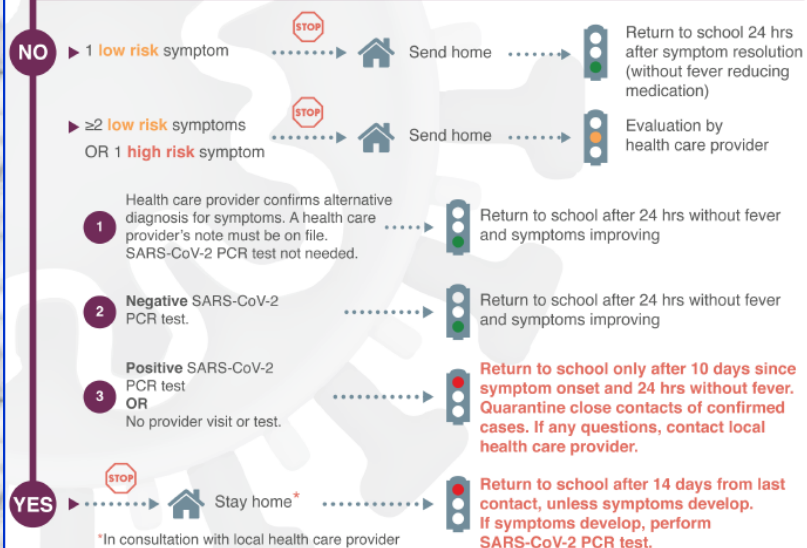
Difficulty breathing



Loss of taste/smell

Exposure to COVID-19 positive person?

Close contact: less than 6 feet, 15 minutes or longer



This care pathway was designed to assist school personnel and is not intended to replace the clinician's judgment or establish a protocol for all patients with a particular condition. Diagnosis and treatment should be under the close supervision of a qualified health care provider.

Thank You O'Fallon Fire Department for helping us learn all about Fire Safety!



Clinic *Performance*

Saturday, October 23 Monday, October 25
9:00 a.m. - 12:00 p.m. Halftime | Men's Soccer Game
Crusader Stadium Crusader Stadium

Register Online Today

stdominichighschool.regfox.com/2021stdominick-8cheerclinic

All registrations include a one of a kind DCC clinic t-shirt and cheer bow!

NOVEMBER 2019

ARCHDIOCESE OF ST. LOUIS
Office of Child and Youth Protection

SAFE ENVIRONMENT USER REGISTRATION

Got to <https://www.preventandprotectstl.org>

Click "Register" below the LOG IN button (image at right).

Enter the passcode **stlprotect** when prompted.

Select the type of location where you are a volunteer or employee

- Parish or Parish School

Select the specific location by name

- St. Paul Parish and School (St. Paul)

Click the roles associated with your employment/service at the parish.

If you are active at only one location, this will be your "primary" location.

If you are active at more than one location, click the ADD PARISH/LOCATION button and repeat the steps above. With more than one location, please click the "This is my main/primary location" circle to indicate where you are employed or, if you are a volunteer, where most of your ministry or service is performed.

Complete your personal information. Please enter your **legal first name** for the purposes of the background screening.

Create a username, password and password clue.

Agree to the Terms of Use and click SUBMIT.

You will then be prompted to submit information for a background screening, register for a Protecting God's Children workshop, view two online training modules, and agree to the Code of Ethical Conduct.

*If you have previously attended a PGC workshop, the system will find and/or ask you to confirm your previous record of attendance. You will not be prompted to register for an upcoming workshop. If, for some reason, it does not match your previous training to this account and you are prompted to register for a class, please register for "PREVIOUSLY ATTENDED-DATE NOT LISTED" and send an email to the address below. We will apply the correct training record to your account.

Use may use the links in your approval checklist to access these requirements. These steps may be completed all at once or may be completed separately at your convenience. You will receive an automated email weekly to remind you which requirements are outstanding. When all compliance requirements have been completed, your account will be approved and you will be clear to work with minors and vulnerable adults.

LOGIN

Username

Password

☐ Remember this account

LOGIN

[Forgot Password](#) [Register](#)

- ☒ Register onto the site
- ☐ Submit New Background Check
- ☐ Complete "Protecting God's Children" training
- ☐ Complete "Mandated Reporter" training
- ☐ Complete "Code of Conduct" training
- ☐ Sign "Code of Conduct"

Should you need any assistance, please contact ocyp@archstl.org

**Trunk or Treat is this Friday,
October 22 in
the School
Parking
Lot!**

ST. PAUL IN ST. PAUL

Healthy Habits Lunch

OCTOBER 2021

*% Based				
WG=Whole Grain Ingredients				
Monday	Tuesday	Wednesday	Thursday	Friday
				
				1
				1/2 DAY NO FOOD SERVICE
4	5	6	7	8
ENTRÉE CHOICE 1 Grilled Chicken Sandwich ENTRÉE CHOICE 2 Hot Dog on Bun SIDE ITEMS: Seasoned Noodles Carrot Sticks with Dip Seasonal Fresh Fruit 1% Milk	ENTRÉE CHOICE 1 Jumbo Corn Dog ENTRÉE CHOICE 2 Pretzel & Cheese SIDE ITEMS: Corn Seasonal Fresh Fruit Vanilla Wafers 1% Milk	ENTRÉE CHOICE 1 PAPA JOHNS PEPPERONI PIZZA ENTRÉE CHOICE 2 NO ALTERNATE SIDE ITEMS: TOSSED SALAD WITH DRESSING CHILLED FRUIT 1% MILK	ENTRÉE CHOICE 1 French Toast Sticks with Syrup ENTRÉE CHOICE 2 Scrambled Eggs SIDE ITEMS: Triangle Hash Brown Bacon Seasonal Fresh Fruit 1% Milk	ENTRÉE CHOICE 1 Toasted Cheese Ravioli with Sauce ENTRÉE CHOICE 2 Chicken Strips SIDE ITEMS: Steamed Broccoli Breadstick Cookie 1% Milk
11	12	13	14	15
COLUMBUS DAY ENTRÉE CHOICE 1 Nine Bosco Sticks ENTRÉE CHOICE 2 America Chicken Drumsticks SIDE ITEMS: Pinta Mixed Veggies Santa Maria Applesauce 1492 Ocean Blue Oreo Map Milk 1%	ENTRÉE CHOICE 1 Popcorn Chicken ENTRÉE CHOICE 2 Mini Corn Dogs SIDE ITEMS: French Fries Grapes & Cheese Cubes Brownie 1% Milk	ENTRÉE CHOICE 1 PAPA JOHNS CHEESE PIZZA ENTRÉE CHOICE 2 NO ALTERNATE SIDE ITEMS: CARROTS & CELERY WITH DRESSING CHILLED FRUIT 1% MILK	ENTRÉE CHOICE 1 Pepperoni Hot Pocket ENTRÉE CHOICE 2 Chicken Nuggets SIDE ITEMS: Lettuce & Carrot Salad with Ranch Seasonal Fresh Fruit Cookie	ENTRÉE CHOICE 1 Bowl of Chili ENTRÉE CHOICE 2 Chicken Drumsticks SIDE ITEMS: Cheddar Goldfish Seasonal Fresh Fruit Jell-O 1% Milk
18	19	20	21	22
ENTRÉE CHOICE 1 Golden Grilled Cheese Sandwich ENTRÉE CHOICE 2 Manwich Sloppy Joe SIDE ITEMS: Pickle Spear Seasonal Fresh Fruit Cookie 1% Milk	ENTRÉE CHOICE 1 Mini Waffles with Syrup ENTRÉE CHOICE 2 Pancakes with Syrup SIDE ITEMS: Bacon Slice Yogurt Seasonal Fresh Fruit 1% Milk	ENTRÉE CHOICE 1 PAPA JOHNS PEPPERONI PIZZA ENTRÉE CHOICE 2 NO ALTERNATE SIDE ITEMS: CARROTS & CELERY WITH DRESSING CHILLED FRUIT 1% MILK	ENTRÉE CHOICE 1 Cheeseburger on WG Bun ENTRÉE CHOICE 2 Chicken Rings SIDE ITEMS: Chips Seasonal Fresh Fruit Rice Krispies Treat 1% Milk	ST. LOUIS BLUES SPECIAL ENTRÉE CHOICE 1 Hockey Puck Nuggets ENTRÉE CHOICE 2 Zamboni Hot Dog SIDE ITEMS: Tarasenko Tots Center Ice Frozen Treat Goalie Mask Milk
25	26	27	28	29
ENTRÉE CHOICE 1 Ham & Cheese on Bagel ENTRÉE CHOICE 2 Chicken Patty on Bun SIDE ITEMS: *Cheddar Goldfish, WG Seasonal Fresh Fruit *Teddy Grahams 1% Milk	HALLOWEEN SPECIAL ENTRÉE CHOICE 1 Skeleton Bones (Chicken Legs) ENTRÉE CHOICE 2 Devil Dog (Hot Dog) SIDE ITEMS: Spider Legs (Fries) Bat's Teeth (Corn) Witches Surprise Monster Mash Milk	ENTRÉE CHOICE 1 PAPA JOHNS CHEESE PIZZA ENTRÉE CHOICE 2 NO ALTERNATE SIDE ITEMS: TOSSED SALAD WITH DRESSING CHILLED FRUIT 1% MILK	1/2 DAY NO FOOD SERVICE	FALL BREAK
				
DAILY SPECIALS (GRADES 5-8 ONLY) \$3.50				
TONY'S 5" CHEESE PIZZA AND FRUIT	GRILLED CHICKEN SANDWICH WITH CHIPS	GRILLED CHEESE ON TEXAS TOAST WITH FRUIT	2 BOSCO STICKS WITH SAUCE AND FRUIT	2 CHICKEN STRIPS AND FRIES
FSC Food Service Consultants, Inc. FSC "A Local Company Serving You With Pride"				

WE ARE HIRING!

[https://www.archstl.org/job-
opportunities](https://www.archstl.org/job-opportunities)

IF YOU'RE LOOKING FOR...

- SUPPORT OF WORK/LIFE BALANCE
- OPPORTUNITY TO ATTEND DAILY MASS
- GREAT INSURANCE BENEFITS
- GENEROUS PAID TIME OFF
- BUSINESS CASUAL ATTIRE

APPLY TODAY!



CURRENT OPENINGS

Office Manager –
Rural Parish Clinic

External
Communications
Manager

Accountant

Payroll Clerk

Accounts
Receivable Specialist

Accounting Manager

Admin Assistant –
Marriage
Preparation

Receptionist –
Evenings/Weekends

St. Paul Church Ladies Sodality

Fall Quilt Social

Saturday, November 13, 2021

St. Paul Knights of Columbus Hall
1270 Church Road
St. Paul, MO 63366

Doors open at 11am
Bingo starts at Noon

Refreshments available



Upcoming Events at St. Dominic

• St. Dominic will be hosting shadow days for 8th graders September 7 - December 10th. Your student can come live a day in the life of a St. Dominic student! Personalized parent tours are also available daily by appointment. Please register in advance at <https://www.stdominichs.org/admissions/request-info> or call Victoria Luetkemeyer at 636-240-8303 ext. 111 for shadows or Bobbie Peters at 636-240-8303 ext. 108 to schedule a parent tour.

Virtual High School Nights will be held on 9/28, 10/4, 10/13. Sessions will begin online at 7:00 and 7:50 p.m. and each session will be followed by a question and answer session with our student speakers and our administrators. Please register in advance on our website at: <https://www.stdominichs.org/admissions/highschoolnights>

St. Dominic's Open House will be held on October 24th from 10:00 a.m. - 1:00 p.m. All are welcome to come take a tour of our beautiful 50-acre campus, meet with our college guidance coordinators, teachers, students, coaches and club moderators. Pre-register your tour at: <https://www.stdominichs.org/admissions/open-house>



1235 Church Road
St. Paul, MO 63366
636-978-1900
www.st-paulchurch.org

October 15, 2021
School/Parish Code 361

TO: Parents, Students, Teachers, Employees and Organizations Representing Parents,
Students, Teachers and Employees of St. Paul School

During the summer of 1988, the Archdiocese of St. Louis, the LEA (Local Education Agency) for this School, inspected each school building leased, owned or otherwise used as a school building by the Archdiocese to identify all locations of asbestos-containing building materials (ACBM) in accordance with the Asbestos Hazard Emergency Response Act (AHERA) and the AHERA Regulations. Samples were taken of all ACBM and suspected ACBM, analysis of the samples was performed, and the condition of the material was assessed. An Asbestos Management Plan was prepared from this information.

On October 12, 1988, the Archdiocese of St. Louis submitted a copy of this Management Plan to the State of Missouri, as mandated by AHERA and pursuant to the EPA "Asbestos-Containing Materials in Schools" regulations (40 C.F.R. Part 763, Subpart E) (the "AHERA Regulations").

The Management Plan is available in the Office of Building and Real Estate, Cardinal Rigali Center, 20 Archbishop May Drive, St. Louis, Missouri 63119-5738, and in the Administrative Office of this School located at St. Paul School.

The Management Plan shall be available at these locations during normal business hours, without cost or restriction, for inspection by the public, including teachers, other school personnel and their representatives, and parents. A reasonable cost may be charged to make copies of any portion of the Management Plan.

Response Actions to the ACBM may include removal, encapsulation, enclosure or repair. All Response Actions at this school are being performed in compliance with AHERA and the AHERA regulations, in accordance with Management Plan recommendations. If abatement activity has been conducted at your school, this information will be located at the "Response Action" tab of your School's Management Plan.

Periodic Surveillance of the ACBM is being performed every six months. The results of each of these inspections are available in the Management Plan located at the school and the Office of Building and Real Estate. Periodic Surveillance consists of a visual inspection of all areas that are identified in the Management Plan as ACBM or assumed ACBM. Any changes in the condition of the materials that require attention are noted by maintenance personnel and reported to the Office of Building and Real Estate, which initiates the appropriate response action.